

New York University, April 17th, 2013
Workshop for Tisch School of the Arts Writing Students

Prof. Blagovesta Momchedjikova

Guest Artist: Burak Pekoglu, Project Director at BINAA | binaa.co

The Creative Process: Unveiled



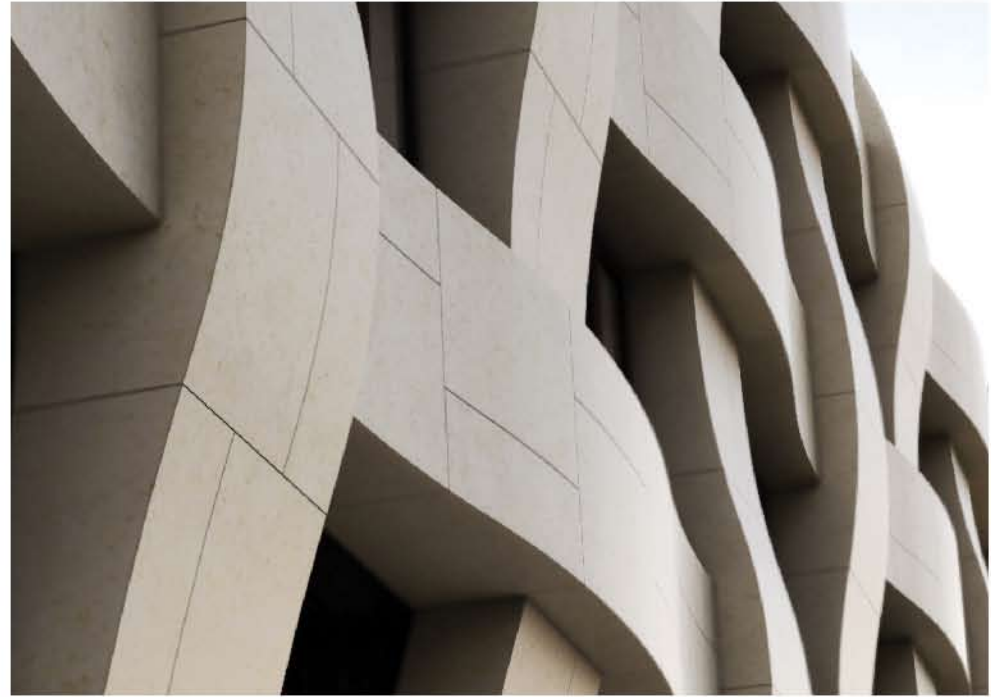
NON

The Art Gallery (240 SM)
Istanbul, Turkey
Client: Derya Demir (Curator)
2009



Thighs & Legs

Charcoal drawing of a live model (24"x 36")
2010



WEAVE

Office + Restaurant (4,500 SM)
Bursa, Turkey
Client: Argul Textile
February 2012 - May 2013

Burak Pekoglu, founder and principal of BINAA (Building INnovation Arts Architecture), is a Turkish architect based in New York. He received his M. Arch. from Harvard Graduate School of Design. BINAA is a collaborative platform where innovative artistic ideas find form. Projects include the *Weave* building (with its custom-tailored stone facade) in Bursa, the art gallery *NON* (with its suspended staircase) in Istanbul, the psychotropic rocking chair *Lulu*, designs/sculptures for public artist Krzysztof Wodiczko, and renderings for public places in Turkey and the United States. Burak Teaching-Assisted to Aga Khan Prof. Hashim Sarkis and Edwin Chan (Partner at Gehry Partners), at Harvard. He participates in collaborative workshops and seminars internationally. His graduate thesis *Crossways Anatolia: Eskisehir* was published and exhibited by the Eskisehir Chamber of Commerce. He has contributed to *Interdisciplinary Design: New Lessons from Architecture and Engineering*, *Arc de Triomphe: World Institute for the Abolition of War Project*, *Istanbul Design Guide*, and *New Trajectories-Convergent Flux: Korea*.

contact: burakpekoglu@gmail.com

"Cities are extensions of our bodies: they too are born, live, grow, multiply, and die. Each city has a soul that connects to ours. Some we love, some not. How we physically experience a place dictates how we remember it - each city provokes our senses differently and uniquely. Architecture is an integral part of how we experience the city, especially the emerging city. There, a singular project has the capacity to transform its surroundings in extraordinary ways; it comes about in unusual ways, orchestrating the convergence of talented, skilled, and responsive minds, locally and globally. Despite the constraints of cultural, geographical, economic, and technical parameters, the process of creation in the emerging city brings about not simply a new building but a whole new set of narratives and possibilities to the environment."